

Wi-Fi® Software for the Zodiac™ Installation and Setup Instructions

Overview

The Wi-Fi software for the Zodiac allows you to connect your Zodiac to a wireless network (802.11b), using a SanDisk® Wi-Fi® SD™ card.

Important notes

1. The Wi-Fi software for the Zodiac requires the Zodiac 1.1 Update available at http://www.tapwave.com/support_downloads.html. If your Zodiac does not have this update, install it first and then install the Wi-Fi software.
2. You must install the Wi-Fi software for the Zodiac before using the SanDisk Wi-Fi card. Do not install the software that comes with the SanDisk Wi-Fi card. If you have already installed the SanDisk software, the Zodiac Wi-Fi installer will delete the SanDisk software and install the proper Zodiac files.

Installation

1. Download the latest Zodiaca_WiFi.prc from <http://www.tapwave.com/wifi>
2. Double click on the Zodiac_Wi-Fi.prc downloaded file to queue it for installation to your Zodiac.
3. Synchronize your Zodiac with your desktop computer.
4. After the HotSync operation is completed, the following screen appears on the Zodiac:



5. Tap OK.
6. In the next screen, you will be prompted to reset your device. Tap OK.

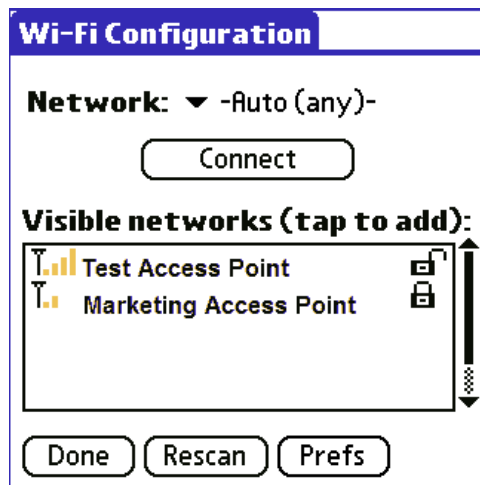
Wi-Fi Setup Procedures

Before using your Wi-Fi card, you must first set up the Wi-Fi software for the Zodiac.

1. Insert the Wi-Fi card into the right-hand SD slot (Slot2) of the Zodiac. You will hear a beep if the card is recognized.
2. The Wi-Fi Configuration screen will launch automatically. If not, in the Launcher, under the Utilities category, tap the Wi-Fi icon.



3. The Wi-Fi Configuration screen appears and initiates scanning of available wireless networks.



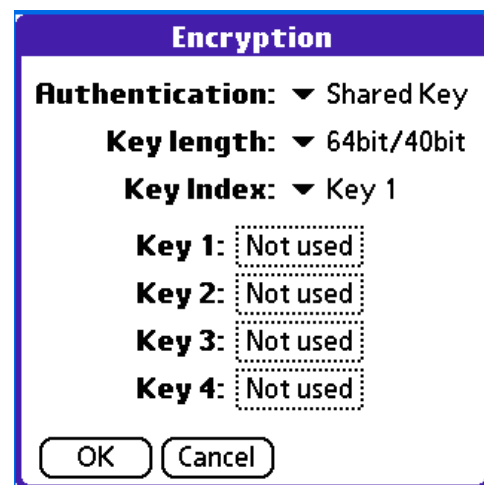
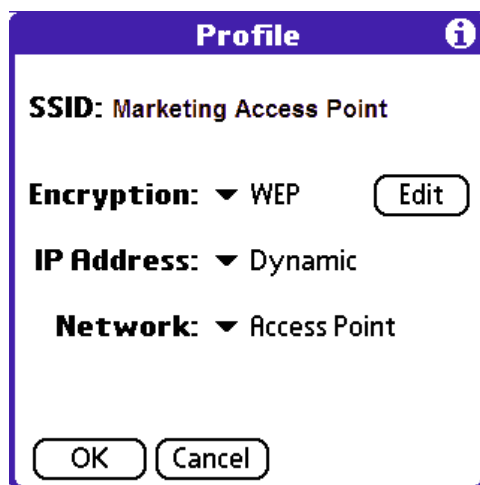
4. The Visible networks box lists all the broadcasted wireless networks. You may need to tap Rescan several times to see all the broadcasted networks. Networks that do not broadcast their names will not appear here.
5. Tap a network to add it to the Network pick list.

A network that does not require an encryption key is listed with this icon: 

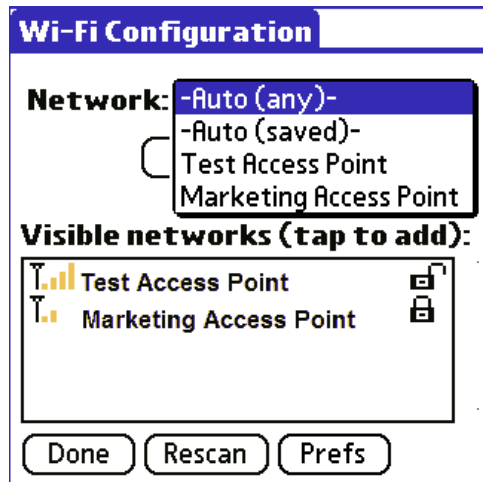
A network that requires an encryption key is listed with this icon: 

Tapping an encrypted network brings up the Encrypted Network dialog box. Enter the WEP key for the network. If you do not know the encryption key, see your network administrator. Select OK to return to the WiFi Configuration screen or Advanced to view the Profile screen shown below. The Profile screen can also be accessed later from the WiFi Configuration screen by selecting the network using the Network selection pulldown and choosing the Edit Current menu item.

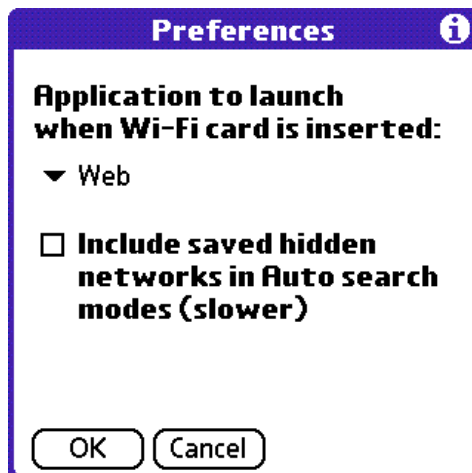
The Profile screen is used to edit information about a specific network. Tap Edit to open the Encryption dialog box. Tap one of the key boxes, ex. Key 1, to add or change the encryption key. If you do not know the encryption key, see your network administrator. After the encryption is set up successfully, the network will be added to and selected in the Network pick list. Select OK to return to the Wi-Fi Configuration screen.



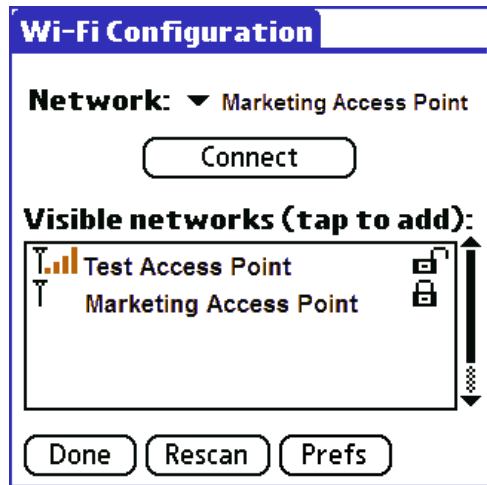
6. Tap the Network selection pulldown on the Wi-Fi Configuration screen to select which networks should be accessed as shown below. If you select one of the networks that you manually configured, only that network will be used. Alternatively, you may choose Auto (all) to automatically connect to any configured or unsecured network that can be found. Or you may select Auto (saved) to automatically connect to only the networks that you have configured.



7. Tap Prefs to view or update Wi-Fi preferences. The Preferences dialog will appear as shown below. Select the preferred application that will launch automatically when the Wi-Fi card is inserted into slot 2 on the Zodiac console. You may also select the checkbox below if you would like to automatically connect to any hidden access points you have configured. Only select this option if you know that one or more of the configured networks is hidden, since it will slow network searches. Select OK to return to the Wi-Fi Configuration screen.



8. Tap Connect to connect to the selected network.



9. Tap Done to exit Wi-Fi Configuration.

You are now connected to the wireless network. Launch the Web Browser or Mail Application for the Zodiac and start experiencing the freedom of Wi-Fi.

Card Removal and Insertion

You may remove the Wi-Fi card anytime by pushing down on the card. To re-insert the card, place the card inside the right-hand SD slot (Slot 2) and push down on it. When you use the Web Browser or Mail Application, the card will automatically connect to the access point in the Network selection pulldown.

Switch Wireless Network,

To switch to a different network, follow these steps:

1. Tap the Wi-Fi icon in the Utilities category in the Launcher.
2. Select the desired network from the Network pick list.
3. Tap Connect.

If the network is visible but is not in the Network list, tap on the network to add it to the Network list. Then tap Connect.

Menu Items

You can access other features via the menus on the Wi-Fi Configuration screen.

Add New Network

If a network does not broadcast its SSID, you can manually add the network by following these steps:

1. Tap the Wi-Fi icon in the Utilities category in the Launcher.
2. Tap the Menu icon.
3. Select Add New under the Network menu.
4. Enter the SSID of the network and select other relevant settings on the screen. If you do not know the SSID, see your network administrator.
5. Tap OK.

Edit or Delete Network

To edit network settings or delete a network, follow these steps:

1. Select the network from the pick list.
2. Tap the Menu icon.
3. Select Edit Current or Delete Current